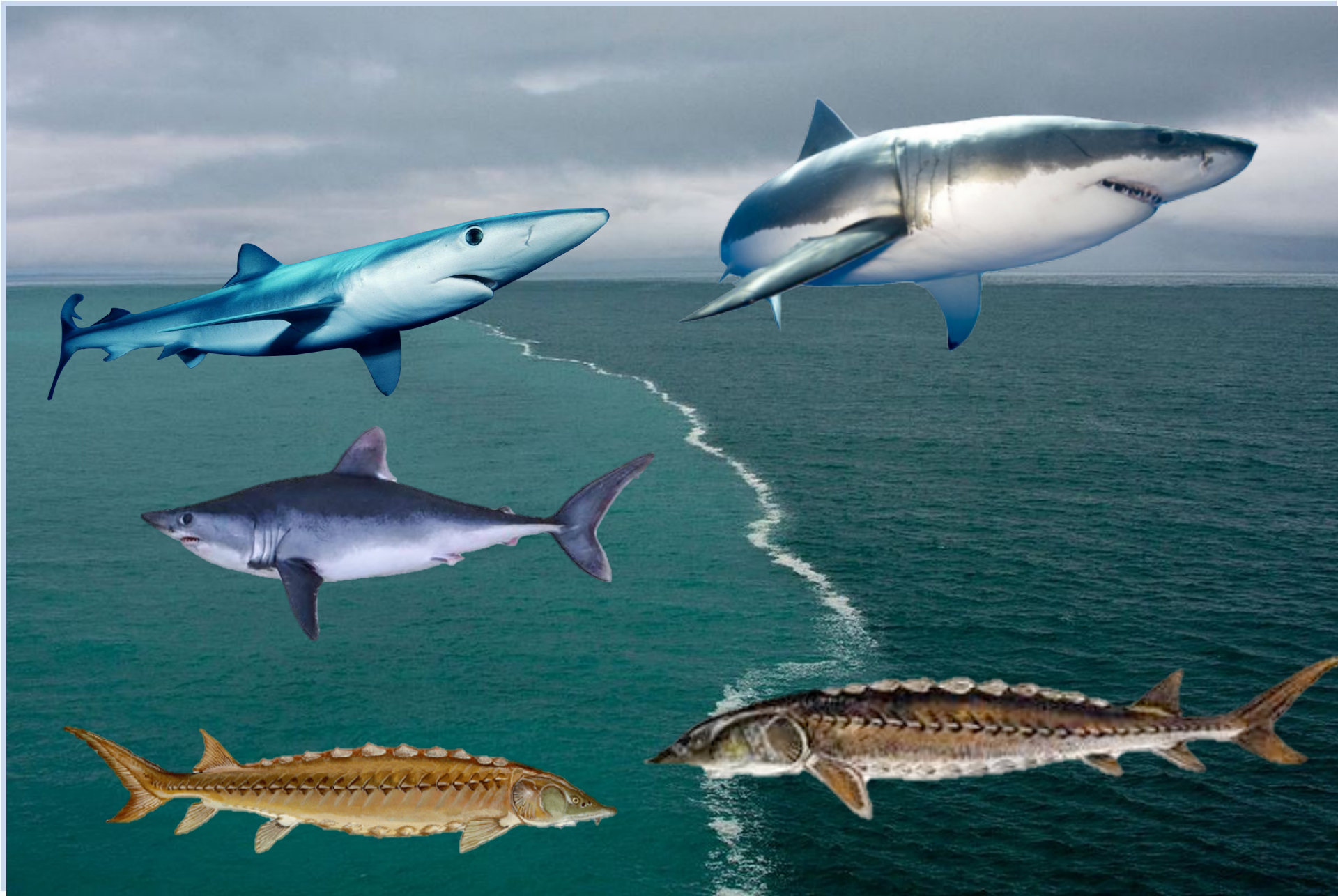


A large shark, likely a Great White, is shown swimming in clear blue water. The shark is positioned diagonally across the frame, moving from the bottom left towards the top right. Its body is a dark grey color, and its fins are prominent. The water is a clear, light blue, and the overall scene is captured in a slightly grainy, underwater photograph style.

**James Sulikowski**





UNIVERSITY OF  
NEW ENGLAND

MARINE SCIENCE CENTER

*a UNE Center of Excellence*



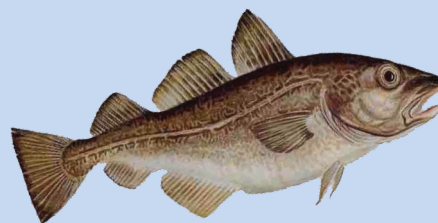
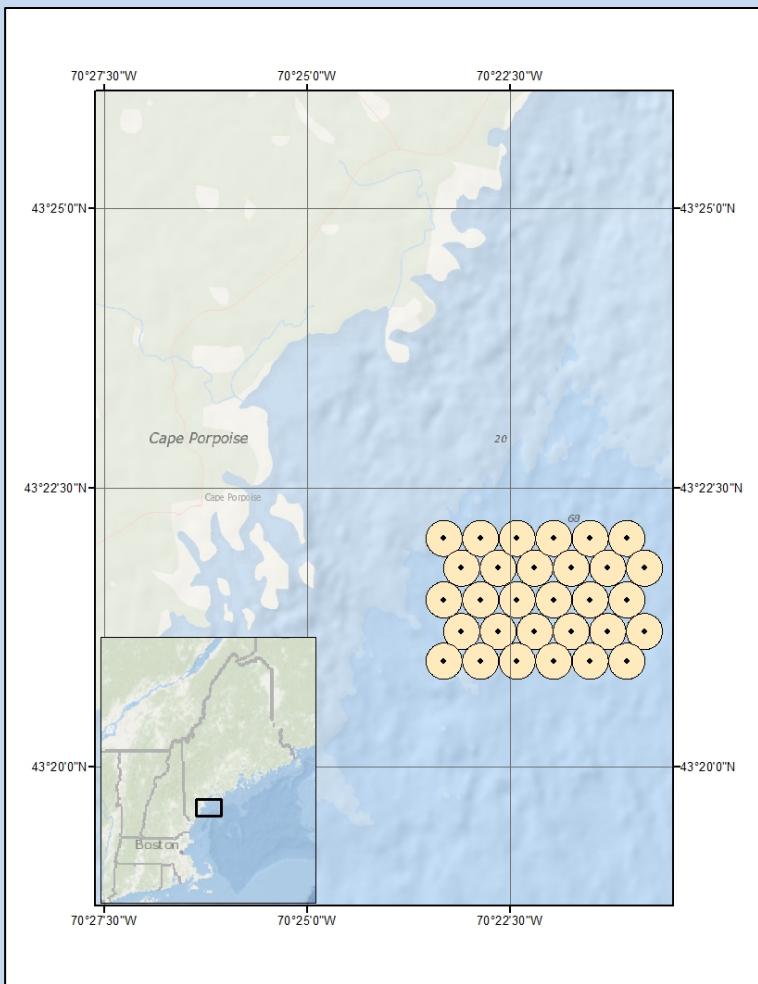




**\$250 Billion**



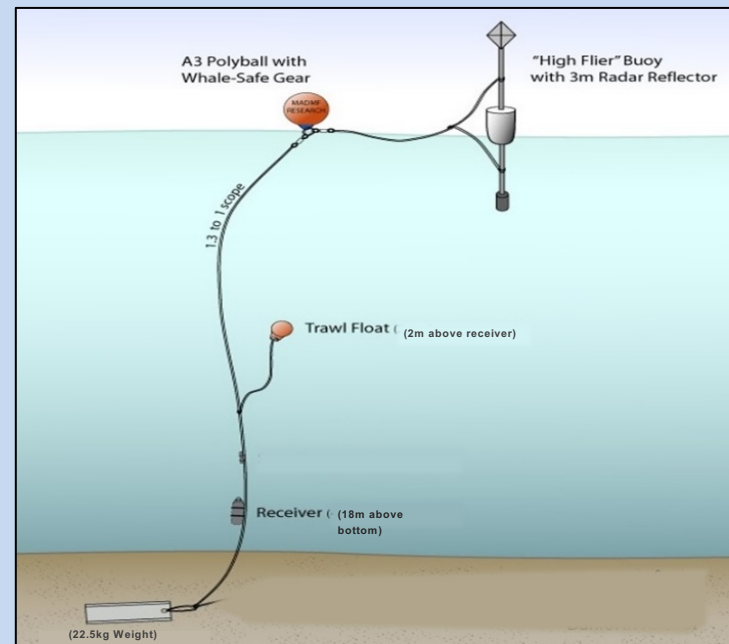




Vemco



VR2W





# Saco River Acoustic Array



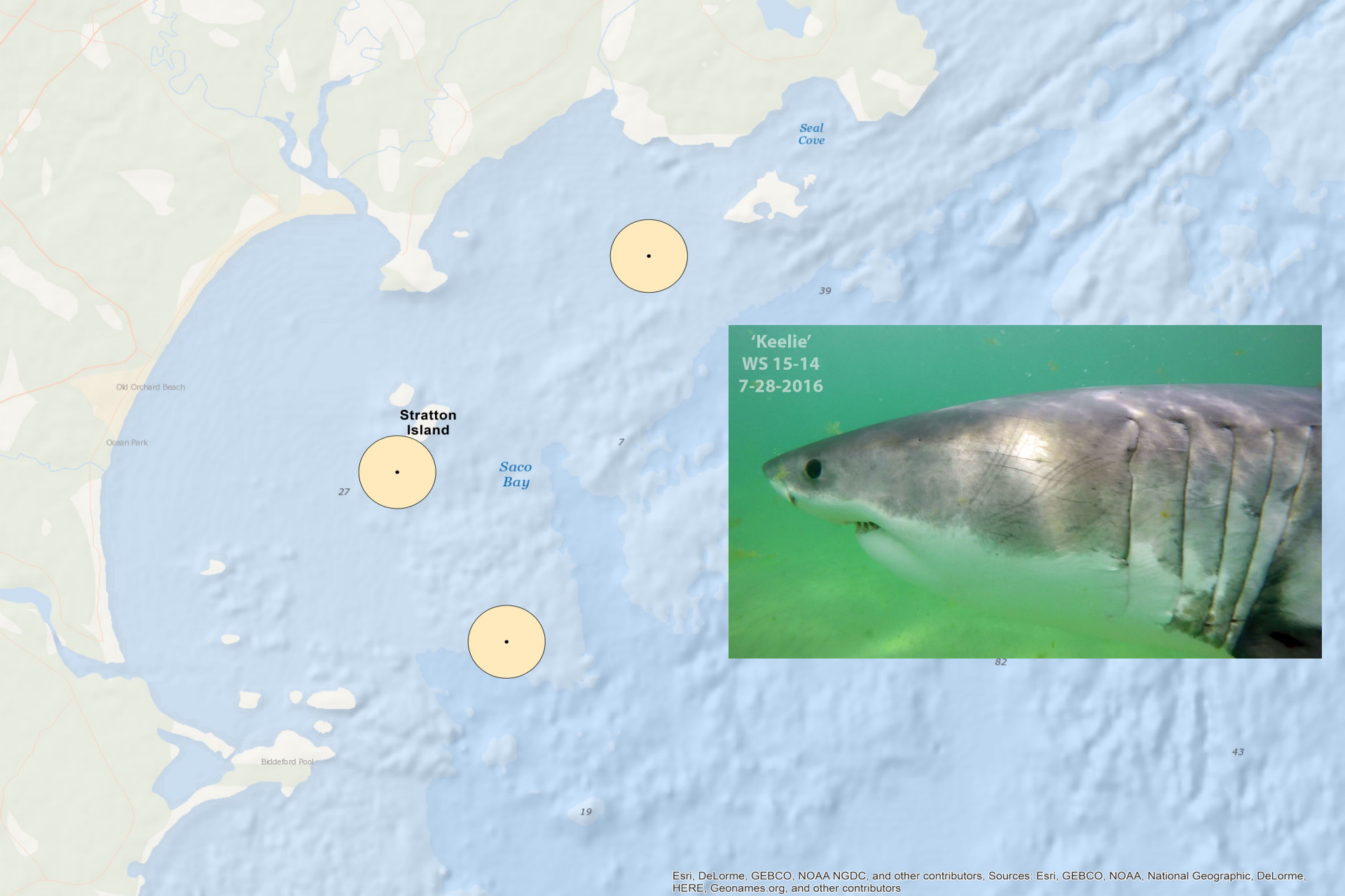




UNIVERSITY OF  
NEW ENGLAND

MARINE SCIENCE CENTER  
a UNE Center of Excellence





Esri, DeLorme, GEBCO, NOAA NGDC, and other contributors, Sources: Esri, GEBCO, NOAA, National Geographic, DeLorme, HERE, Geonames.org, and other contributors











Deployment



UNIVERSITY OF  
NEW ENGLAND

MARINE SCIENCE CENTER

*a UNE Center of Excellence*



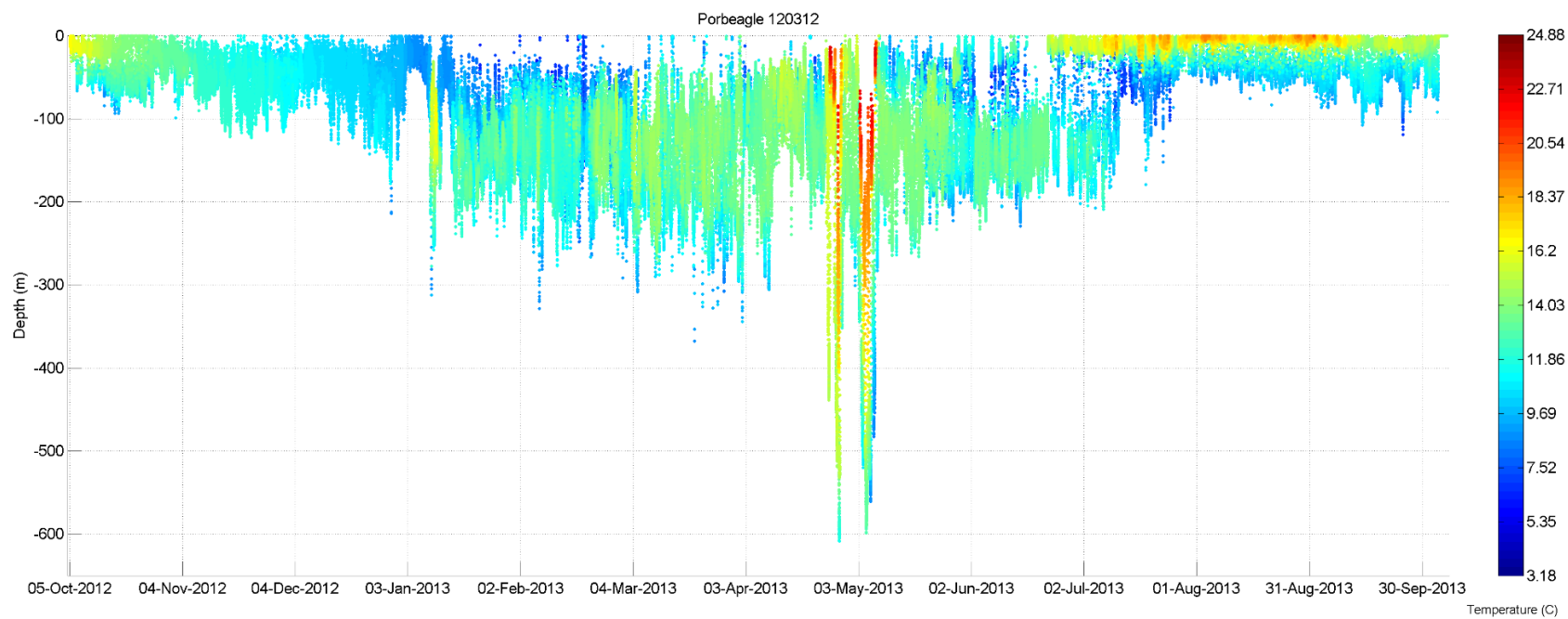
Pop-  
up



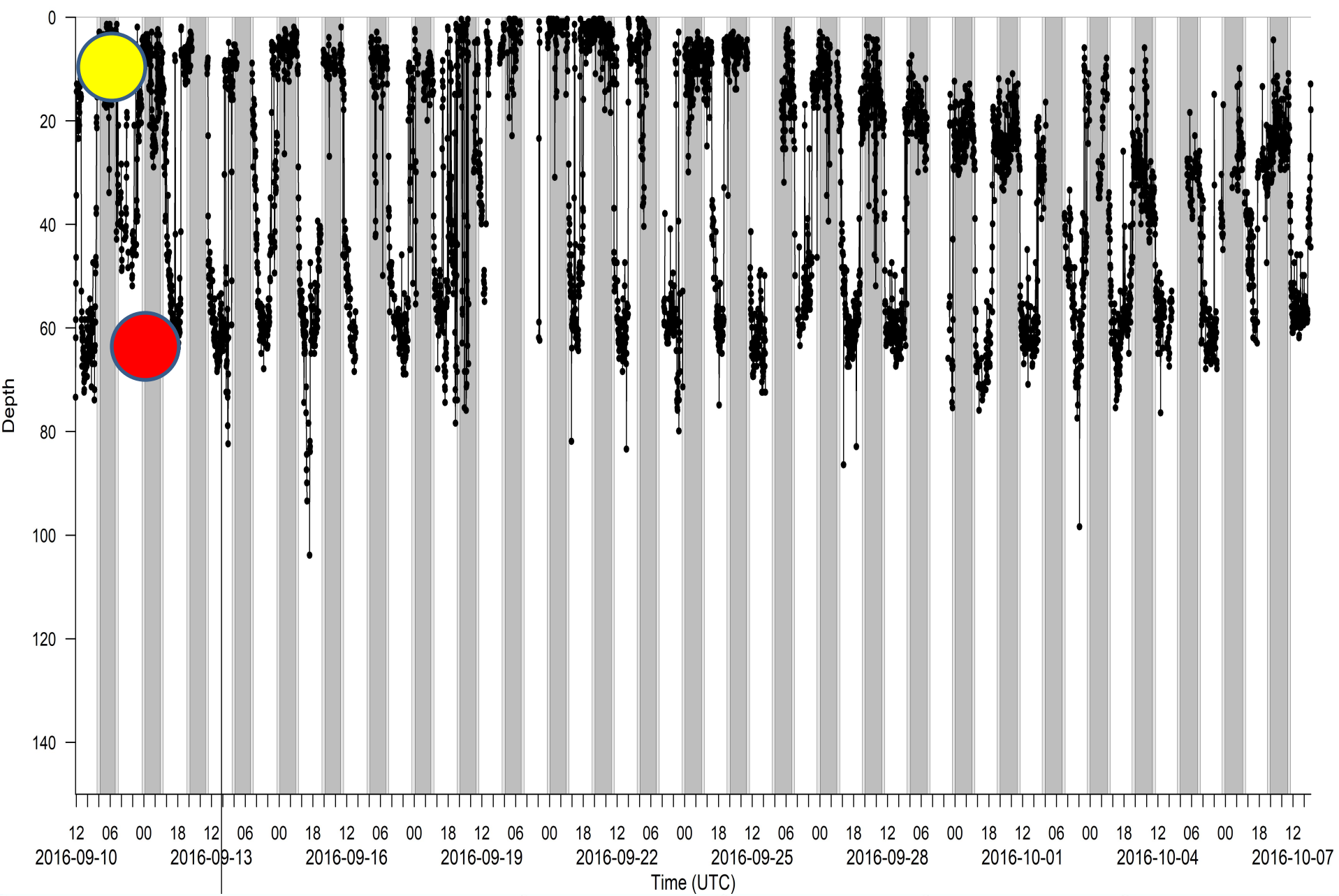
UNIVERSITY OF  
NEW ENGLAND

MARINE SCIENCE CENTER

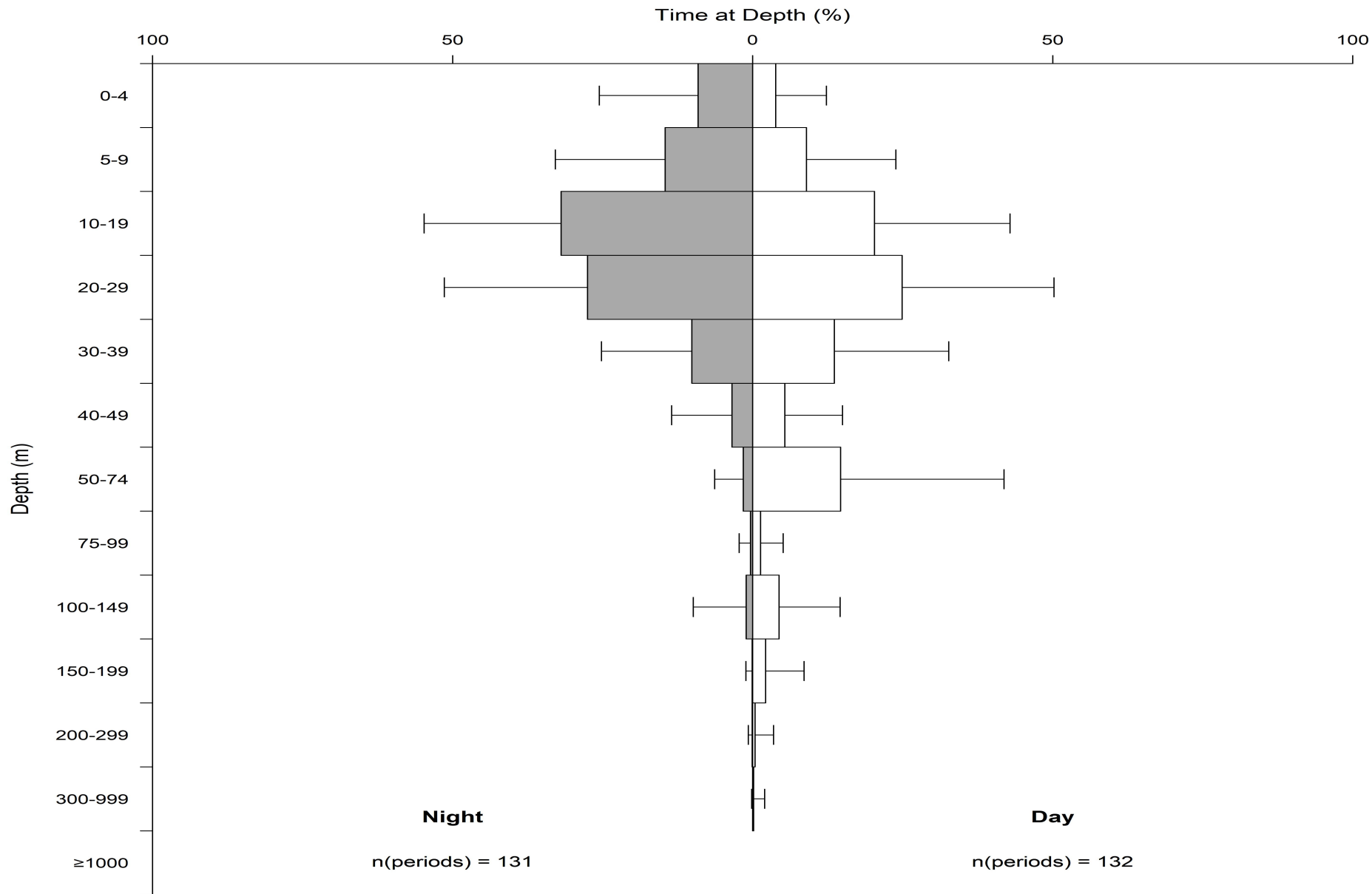
*a UNE Center of Excellence*











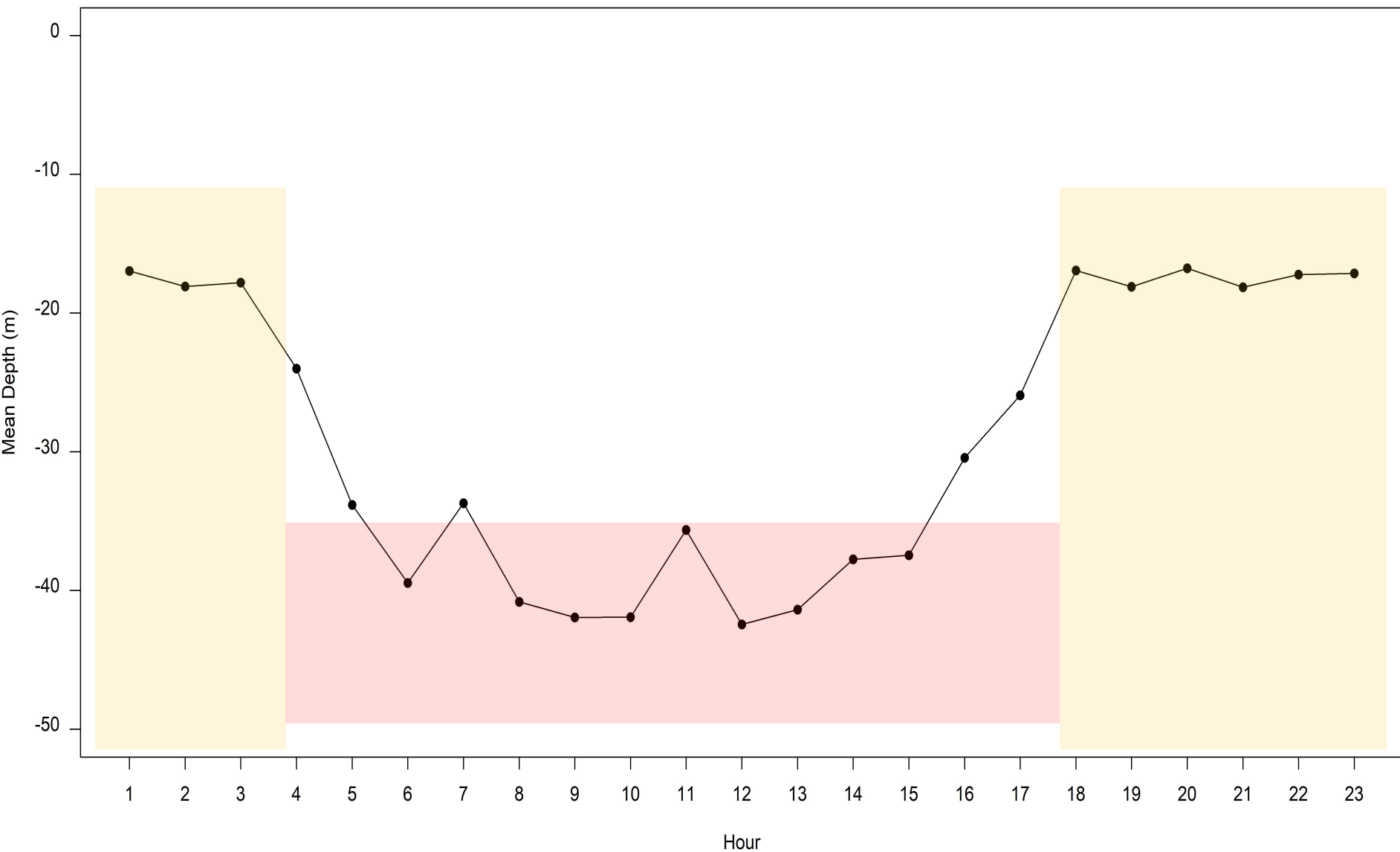
UNIVERSITY OF  
NEW ENGLAND



MARINE SCIENCE CENTER

a UNE Center of Excellence









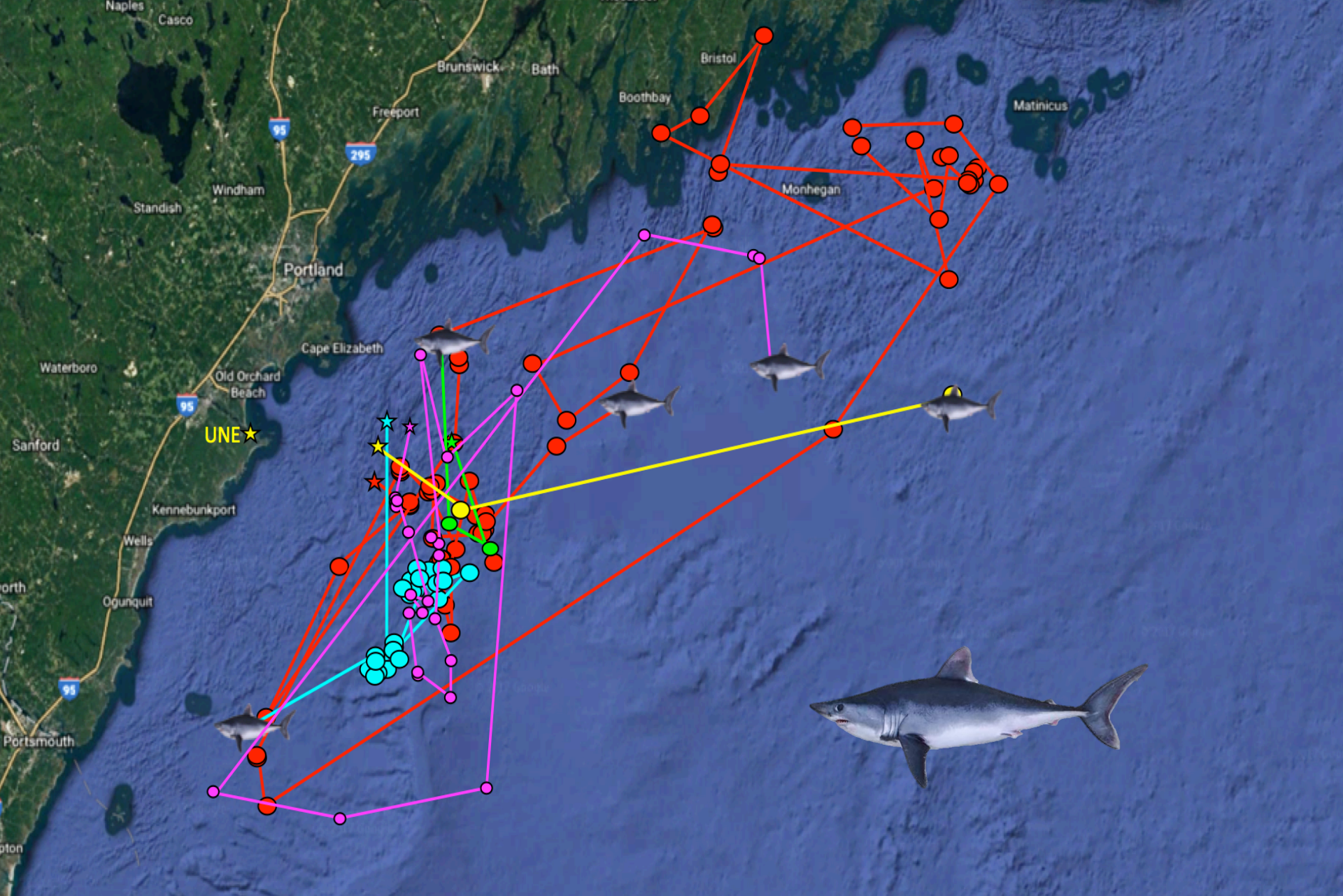




UNIVERSITY OF  
NEW ENGLAND

MARINE SCIENCE CENTER  
a UNE Center of Excellence

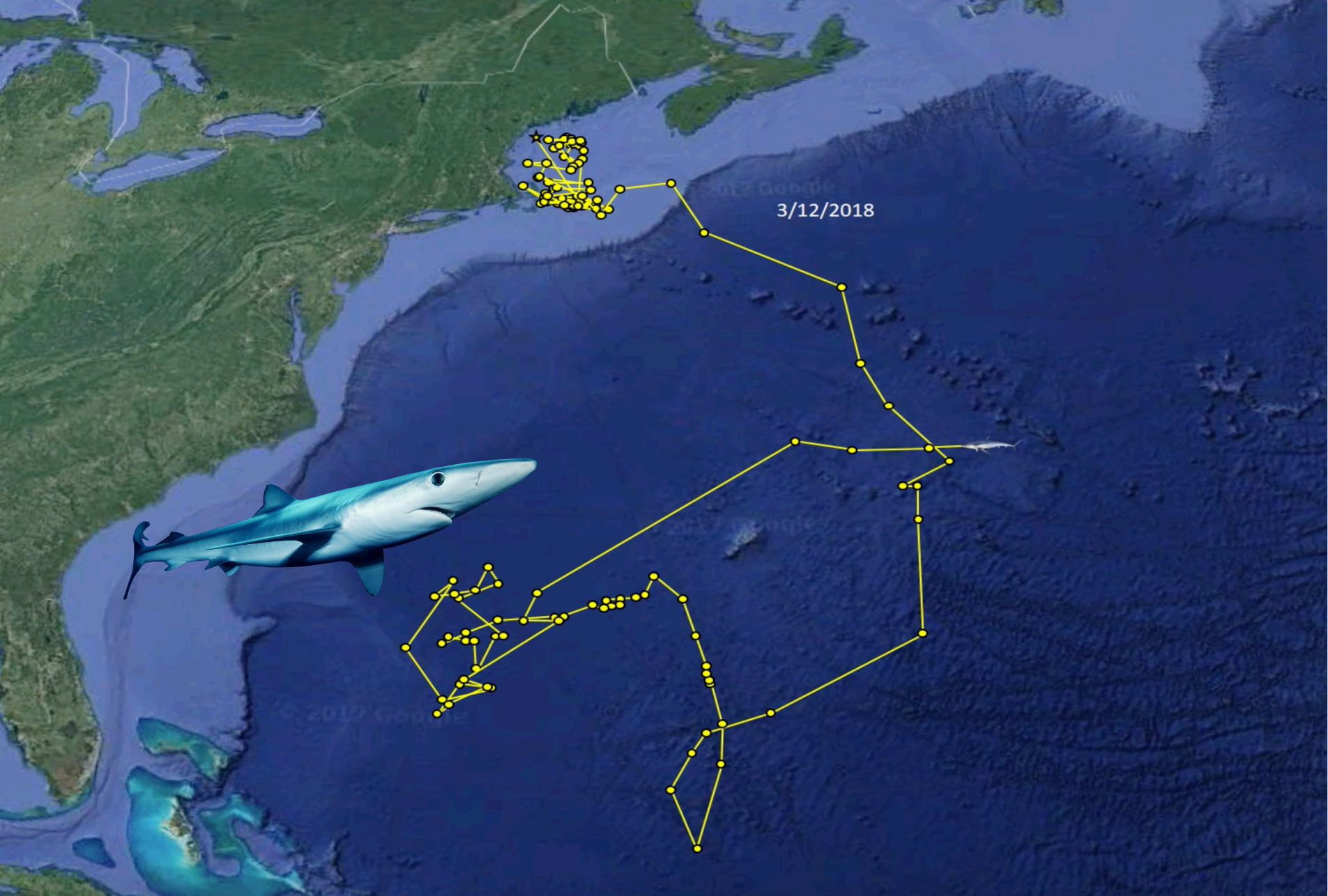




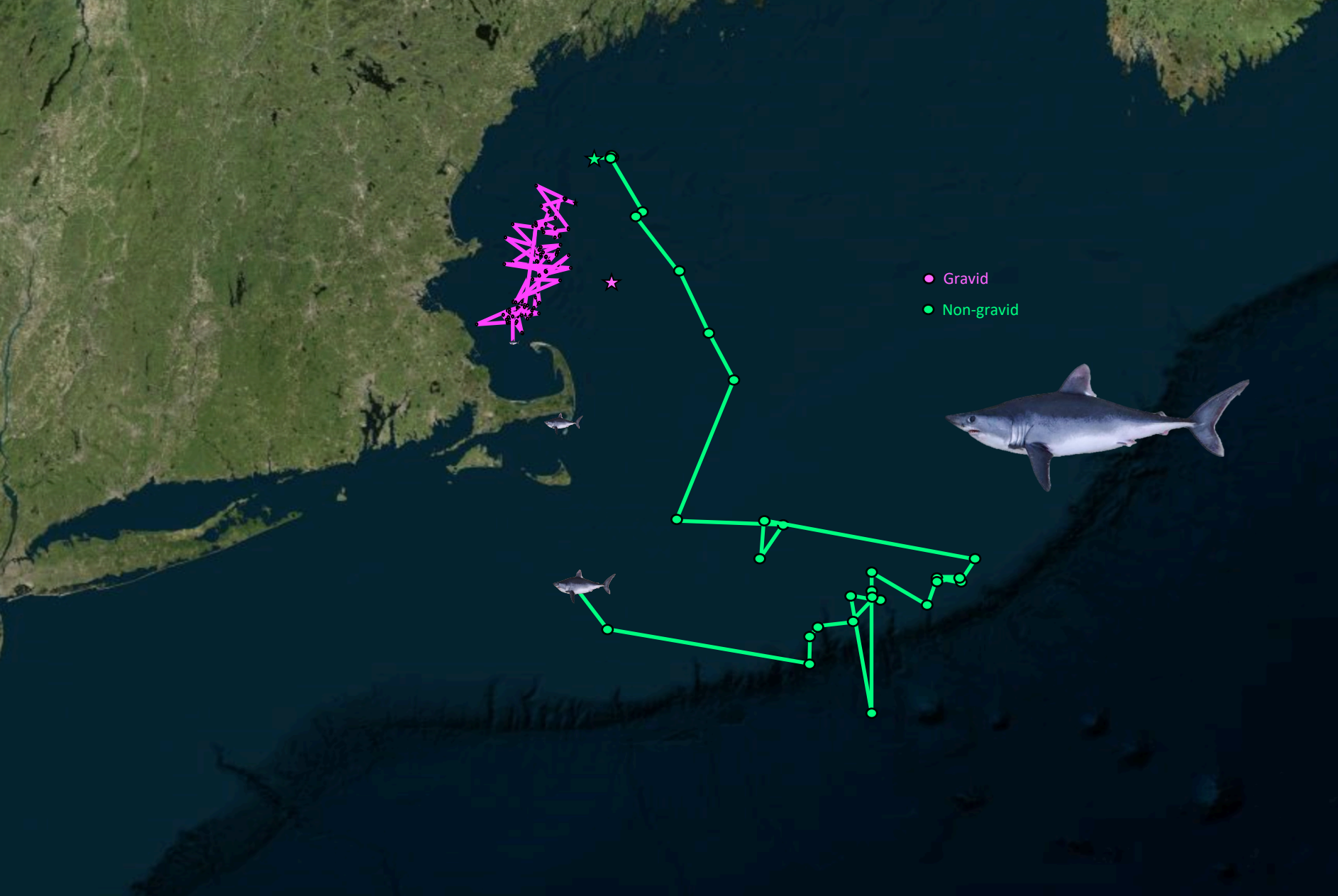


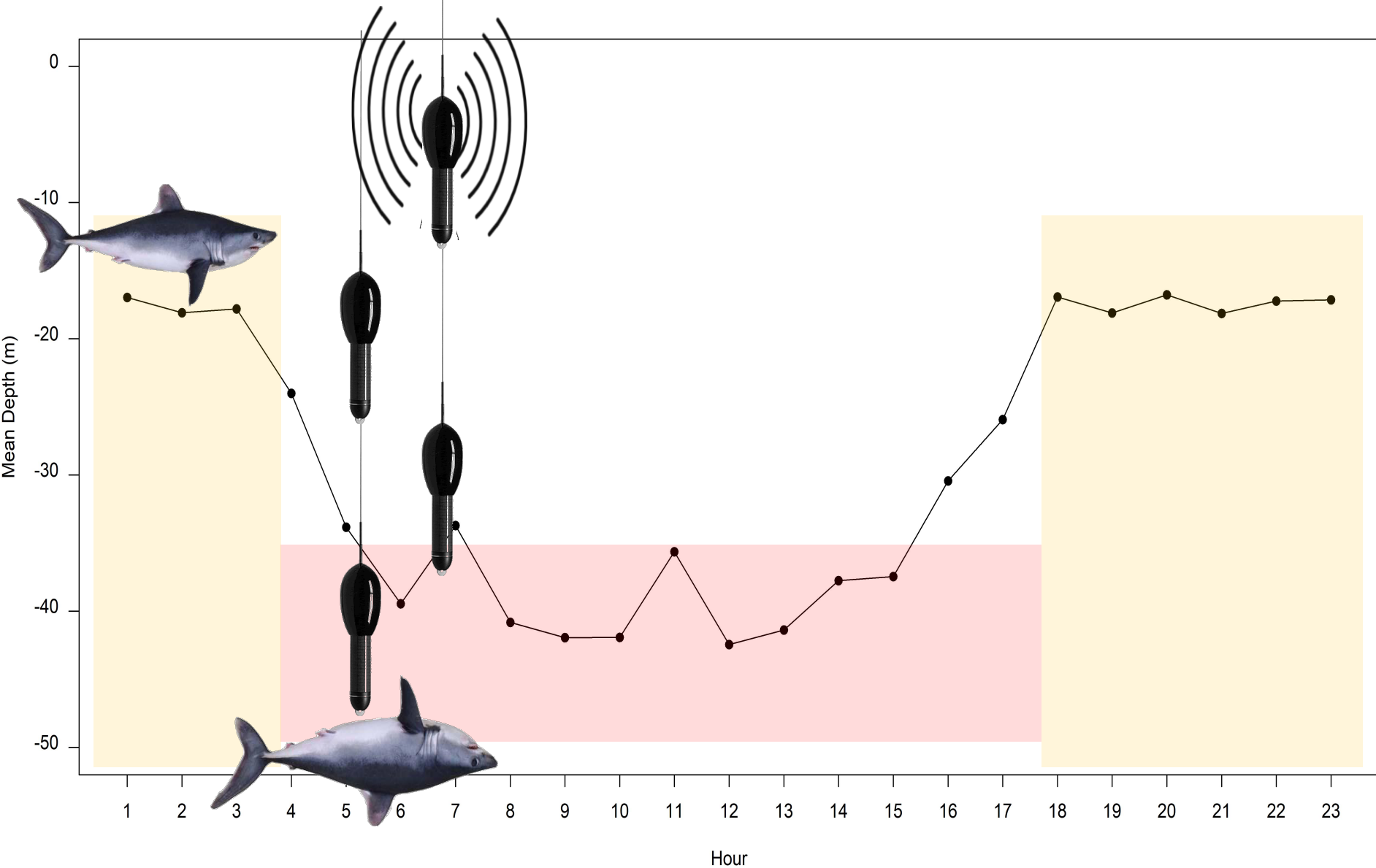










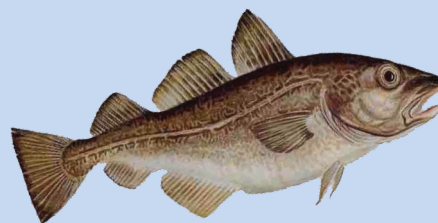
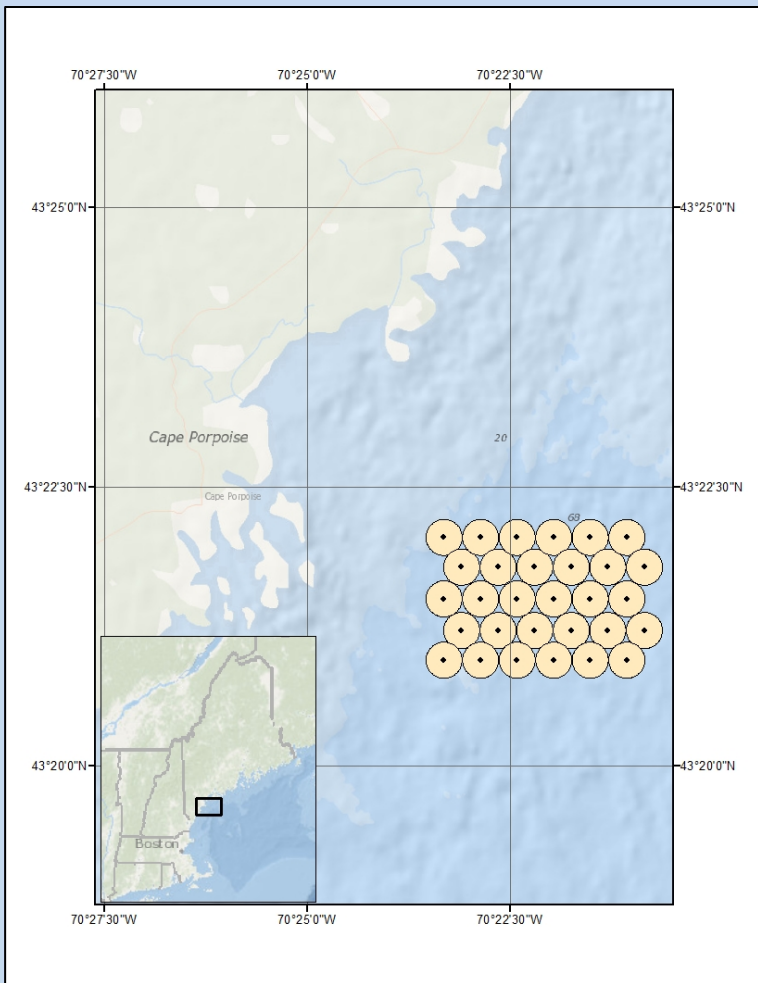


UNIVERSITY OF  
NEW ENGLAND

MARINE SCIENCE CENTER

*a UNE Center of Excellence*

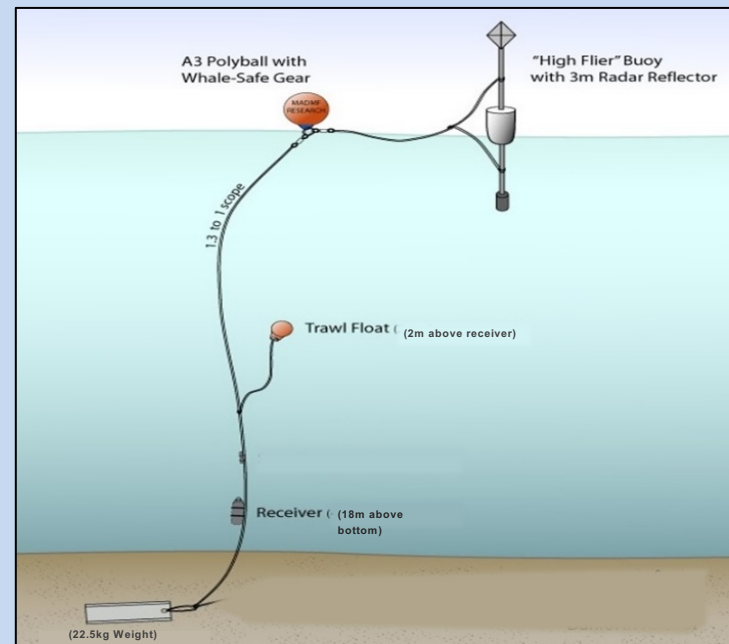


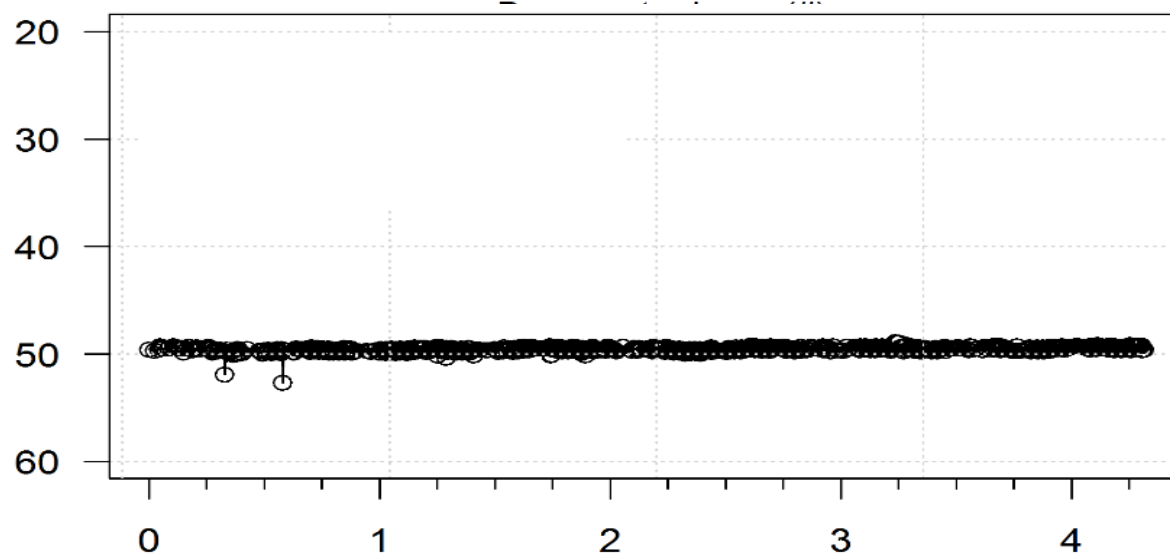
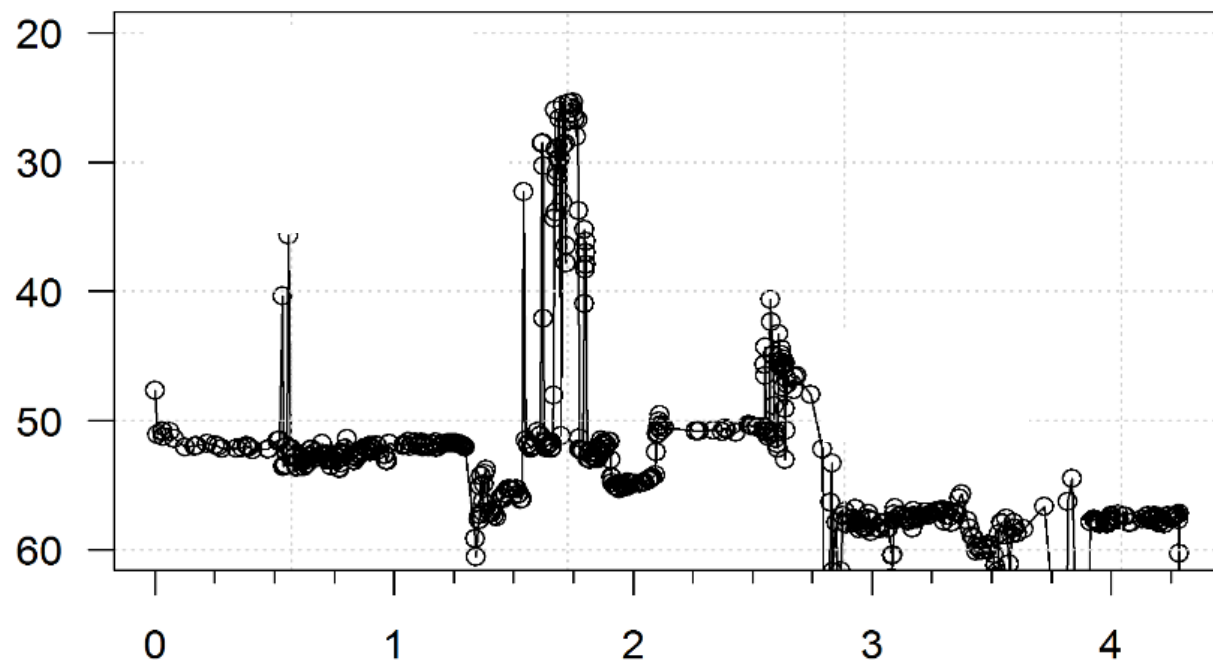


Vemco



VR2W

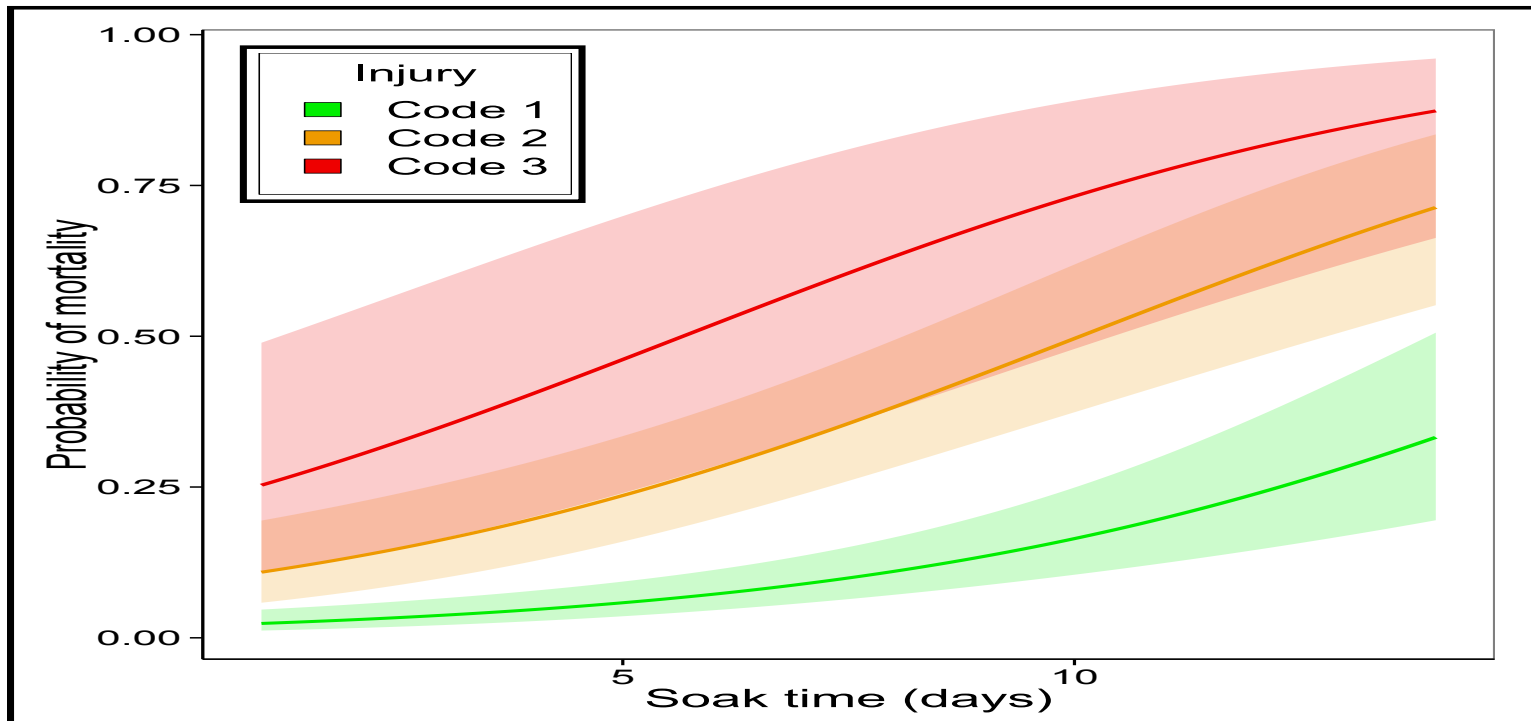
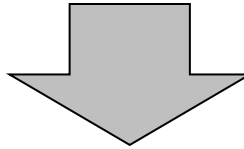


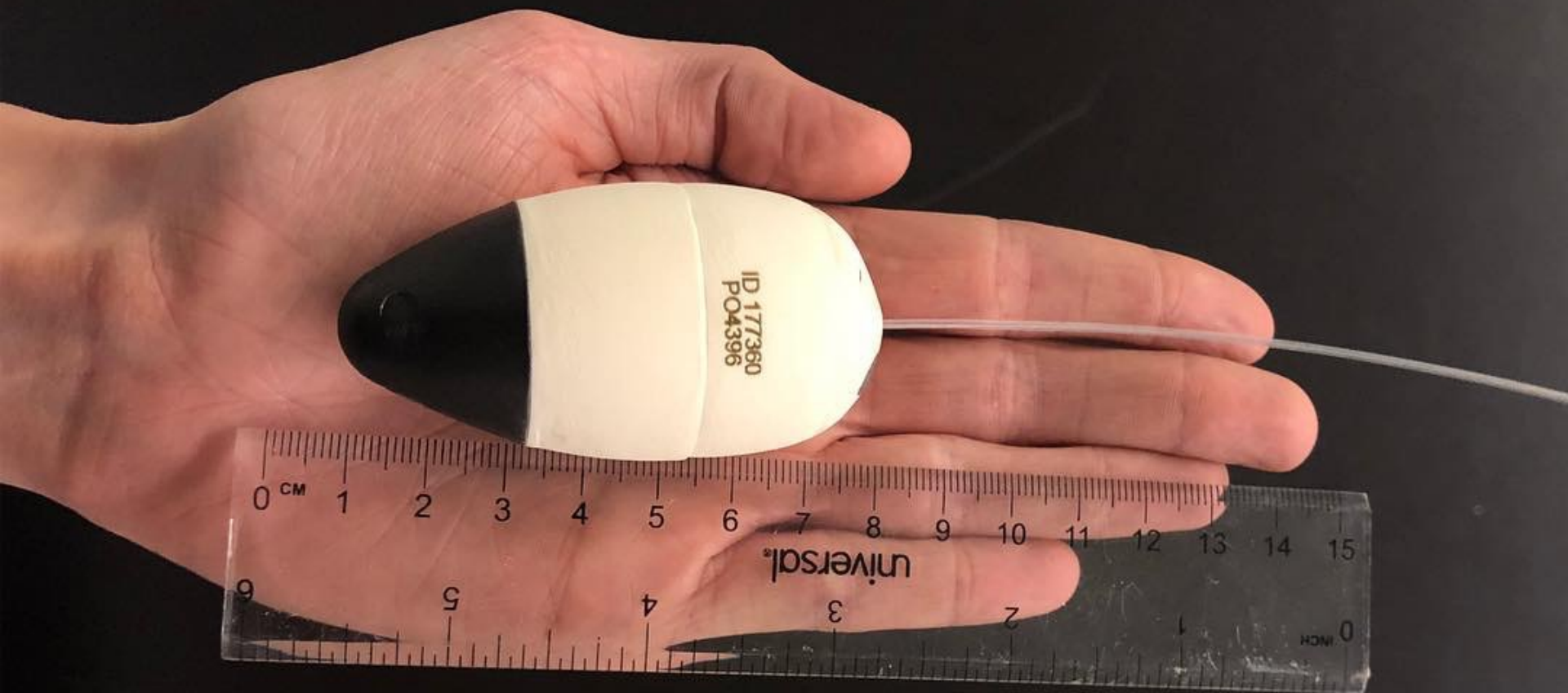


Days post-release (#)



Fishery-scale  
DM estimate

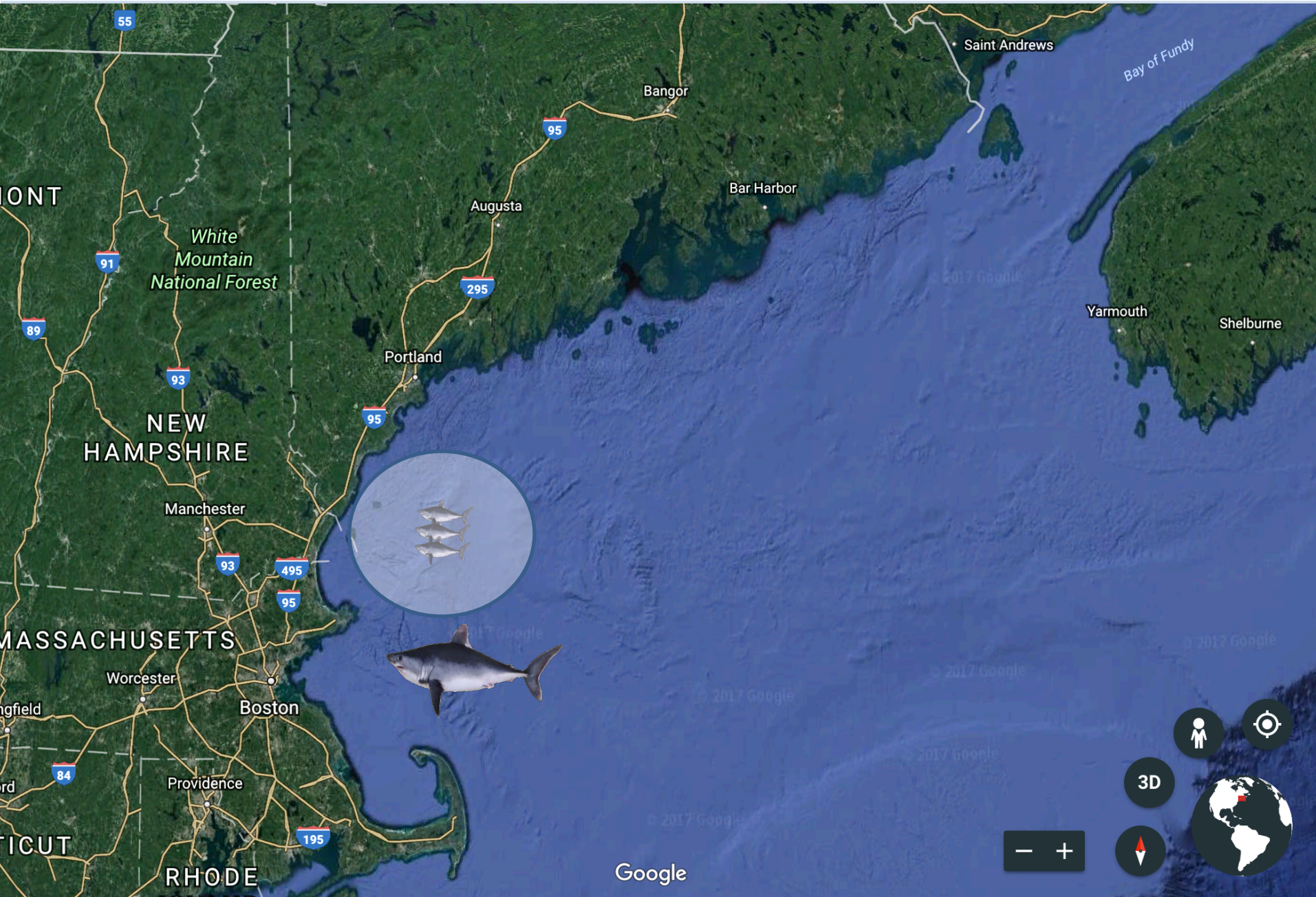












UNIVERSITY OF  
NEW ENGLAND

MARINE SCIENCE CENTER

a UNE Center of Excellence



